

Features:

1. 100% brand new and high quality.
2. This product is an infrared camera that integrates surface temperature measurement and real-time thermal image.
3. The central point measurement cursor is used to locate quickly and accurately to measure the temperature of the target object.
4. The product is the ideal selection for electrician and maintenance personnel and technicians and can be used to find the problem area quickly.
5. Can be used in fields of medical treatment, fire fighting, archaeology, traffic, agriculture, geology, energy, smelting, electronic manufacture, etc.

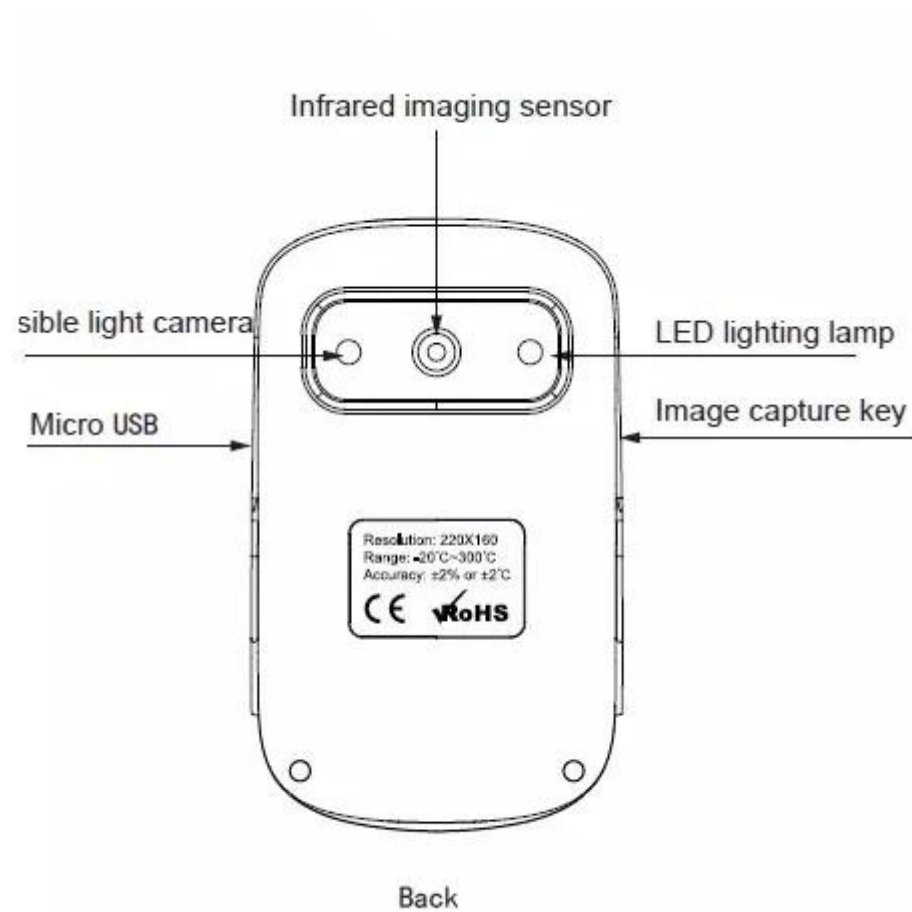
● SPECIFICATION



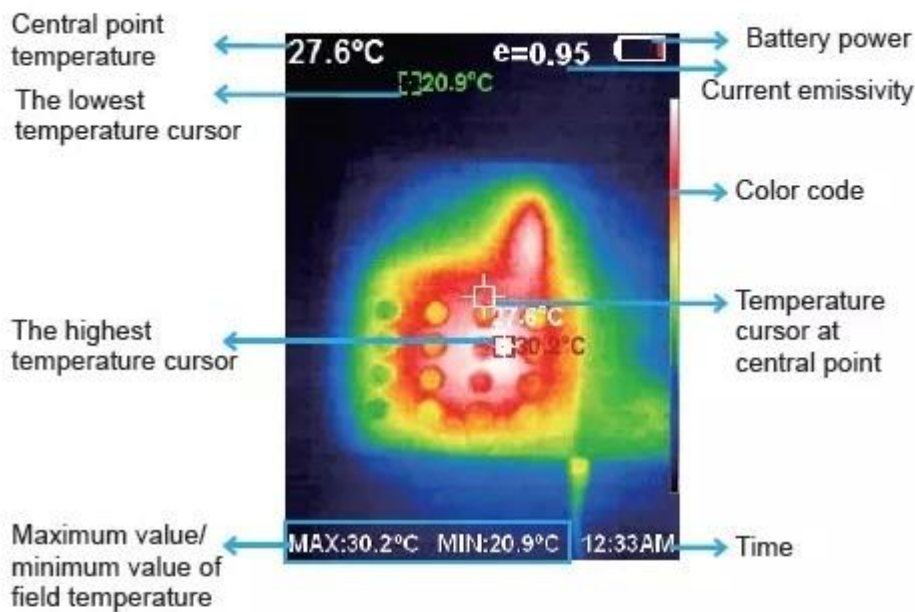
Specifications to 2019 New Released Infrared Imaging Camera HT-A2

Display screen	3.2 " full angle TFT
Infrared image resolution	320*240
visible image resolution	640x480(300,000 pixel)
Field angle/shortest focus length	56°x42°/4.0mm
Thermal sensitivity	0.07°C
Temperature measurement range	-20°C to 300°C (-4°F to 572°F)
Measurement accuracy	±2% / ±2°C
Emissivity	Adjustable from 0.01 to 1.0
Frame rate of thermal images	9Hz
Wavelength coverage	8-14um
Focus mode	Fixed
Color palette	Rainbow, iron oxide red, cold color, black & white, white & black
View option	The integration of thermal image with 25% step length and visible image.
Storage medium	Built-in 3G
File format	JPG
USB	Micro USB 2.0
Power supply	Built-in chargeable 1800 battery
Automatic power-off time	Selectable: 5 minutes/20 minutes/ not power off automatically
Product size (length × width × height)	140mm×80mm×28mm
Product weight	208g
Work temperature	0°C to 45°C

Storage temperature	-40°C to 60°C	
Relative humidity	< 85%RH	
Package Lists	1 x Infrared Thermal Imager 1 x US Plug Adapter 1 x Lanyard 1 x User Manual	1 x Data Cable



4.2. Key Description



1. Color code: used to mark the color corresponding to the relative temperature from low to high in the field of vision.
2. The central point temperature cursor: used to indicate the central position in the screen area. The cursor color displays white. The temperature value is displayed top left corner of the screen.
3. The highest temperature cursor: used to indicate the highest temperature position in the screen area. It will move with the movement of the highest temperature. The cursor displays red. The temperature value is displayed at bottom left corner of the screen.

● PRODUCT PICTURES

XEAST®

The Pictures of Different Views of [Thermal Imager HT-02A](#)

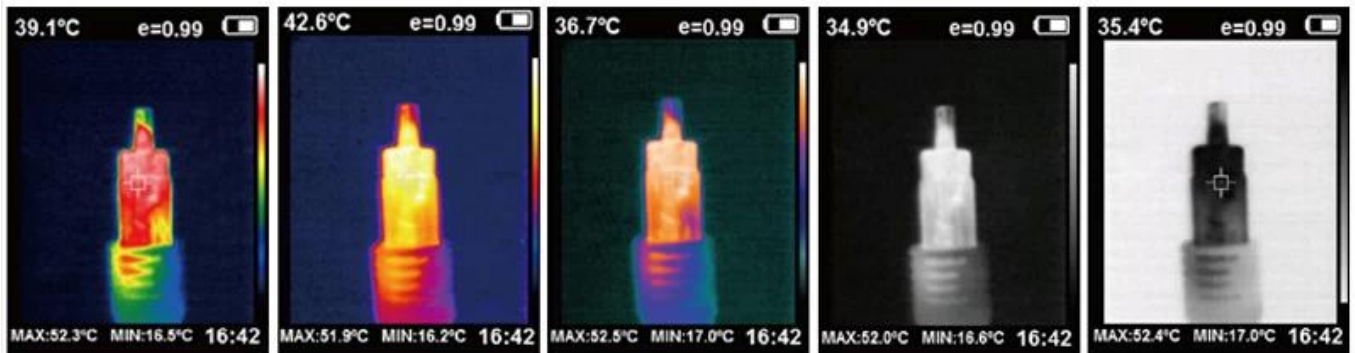




● **APPLICATIONS**

Five major toning imaging modes

Can save/fully display the details of the target object for analysis



rainbow

Iron oxide red

Cool color

Black and white

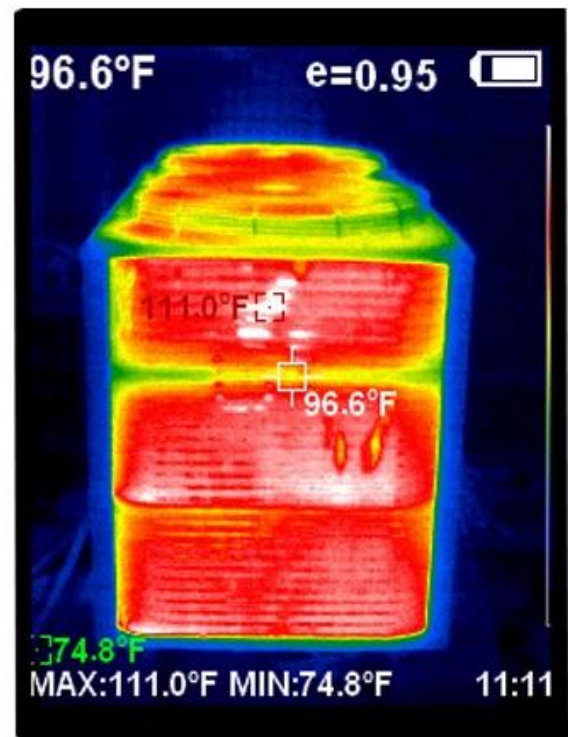
White black

Visible imaging



300,000 high pixels

Infrared thermal imaging



320×240 resolution

● PACKAGE INCLUDE

XEAST®

The Full Package to the Infrared Imaging Camera HT-A2



● TERMS OF TRADE

XEAST®

1). Terms of Payment: We accept T/T, L/C, Paypal, MoneyGram and Western Union.

30% deposit and other 70% balance before shipment.

2). Terms of Shipping:

It depends on clients order quantity and your special request. We often adopt Express (DHL, TNT, UPS, FEDEX, EMS, SPSR, 139 express and so on), LCL, FCL

Items will be careful checking before shipment, and we will update the delivery status timely after the goods are sent out.

COMPANY INFORMATION

XEAST®



2019 New Released Infrared Imaging Camera HT-A2 China Manufacturer in Shenzhen 2019 New Released Infrared Imaging Camera HT-A2 China Manufacturer in Shenzhen