

## Technical parameter

Temperature range	-15°C ~ 550°C (5°F~1022°F)
Precision	±2°C/±2% whichever is greater
Sensor	Uncooled focal plane
Mode	High gain: -15°C~150°C, low gain: 150°C~550°C
Corresponding time of temperature measurement	≤500ms
Thermal imaging pixels	256*192 (49152)
Pixel size	12um
Swatches	White hot, black hot, iron red, lava, rainbow, high contrast rainbow, red hot
Infrared spectrum bandwidth	8~14um
Field of view	56° (H) *42.2° (V)
IFOV	3.8mrad
Thermal imaging sensitivity	<60mK
Frame rate	<25Hz
Temperature measurement display	Central point temperature measurement, high temperature tracking and key area temperature measurement (ROI), the default is high temperature tracking



# Detailed parameters

Picture browse button

Power button

Illumination button

Up, down, left, and right navigation keys, function keys

Return key

Size: 236×75.5×86mm



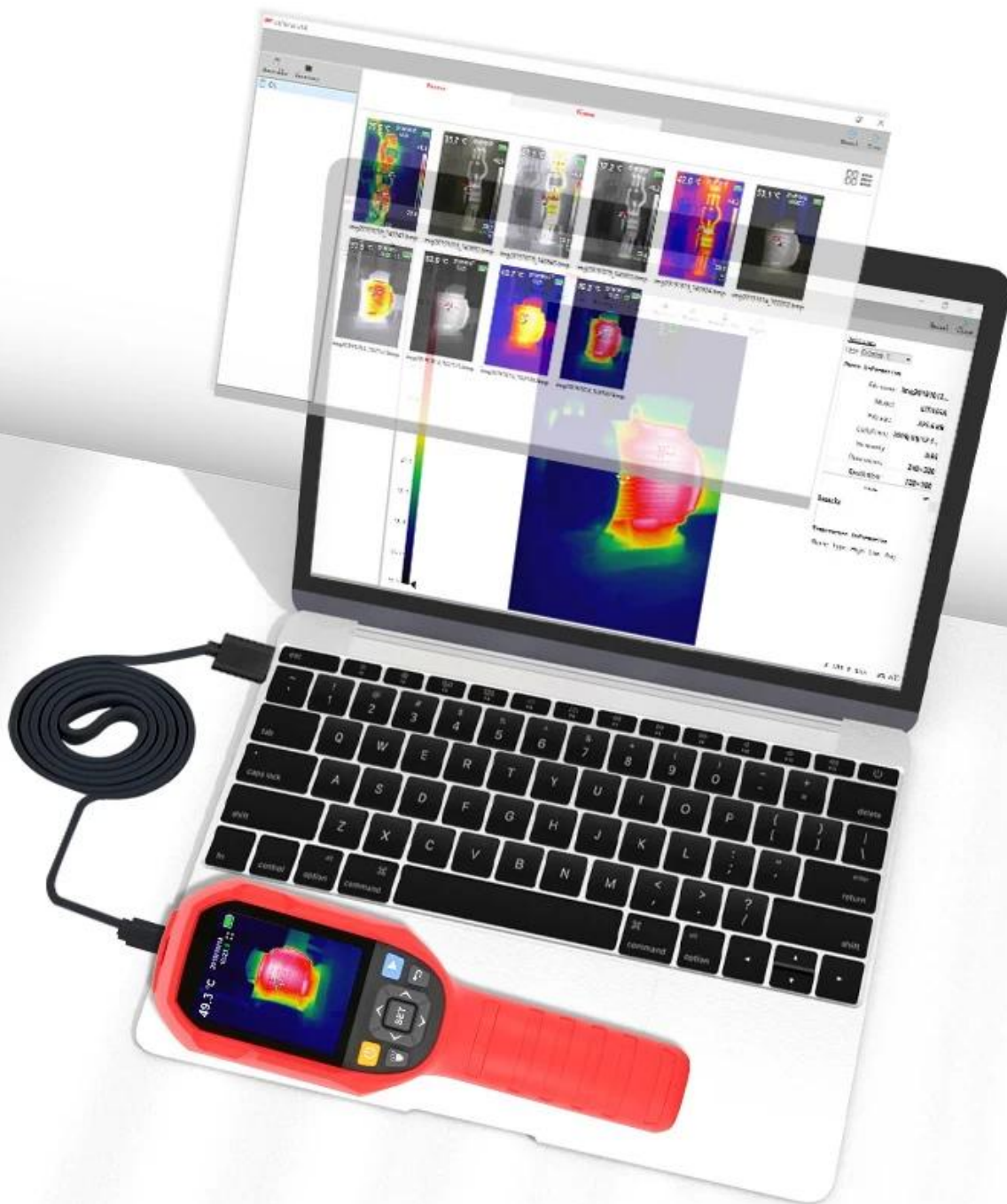


## Image projection/PC software analysis function

After the USB mode in the thermal imager is set to a USB camera, connect the USB data cable to the computer and project the image through the screen.

The upper computer software realizes: taking pictures, image projection function, PC end over-temperature alarm reminder, over-temperature automatic saving pictures.

U disk mode can be realized: browse pictures, analyze picture data, generate reports and export PDF documents





# A wider range of applications

- Electrical equipment maintenance and overhaul
- HVAC pipeline inspection
- Electronics industry
- Photovoltaic industry equipment testing
- Car maintenance inspection, etc.



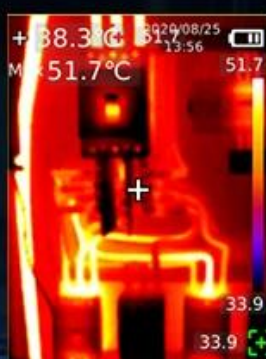
## 256 x 192 Infrared high resolution

The imaging is clearer, the details of the test target are easy to observe, the imaging is wider, and the 2.8 TFT LCD observation is more intuitive

Thermal sensitivity: <50mK / Field of view: 56°\*42.2°



80x60



200×150



256×192

(UTi260B image is clearly visible)

# IP65 protection level

2 meters drop resistance, durable,  
waterproof and dustproof



● PACKAGE INCLUDE





# Product List



1. UTi260B 2. Color box 3. Manual 4. Warranty card 5. Data cable 6. Memory card





Company Outlook



Sales Dept



Showroom



Company View



Manufacturing Line



Warehouse



Testing Machine



SMT Dept



Mold insection Line



Team Building



Customer Visting

