

---

● SPECIFICATION

XEAST®

□□□  
□□□□3D□□□□□□□□12□□□□□□□□□□□□  
□□□□□□±3°  
□□□□□7mm  
□□□□□2cm  
□□□□□5□□□□±1□□□□□□  
□□□□□5m±1mm  
□□□□□□□□2 \* 18650□□□□□□  
□□□□□20□□  
□□□2mm / 5m  
□□□□□360×3  
□□□□□□□□-10°C□□40°C  
□□□□□□□/□□  
□□□□□□□□□□IP54  
□□□□□□□□□□1.6kg

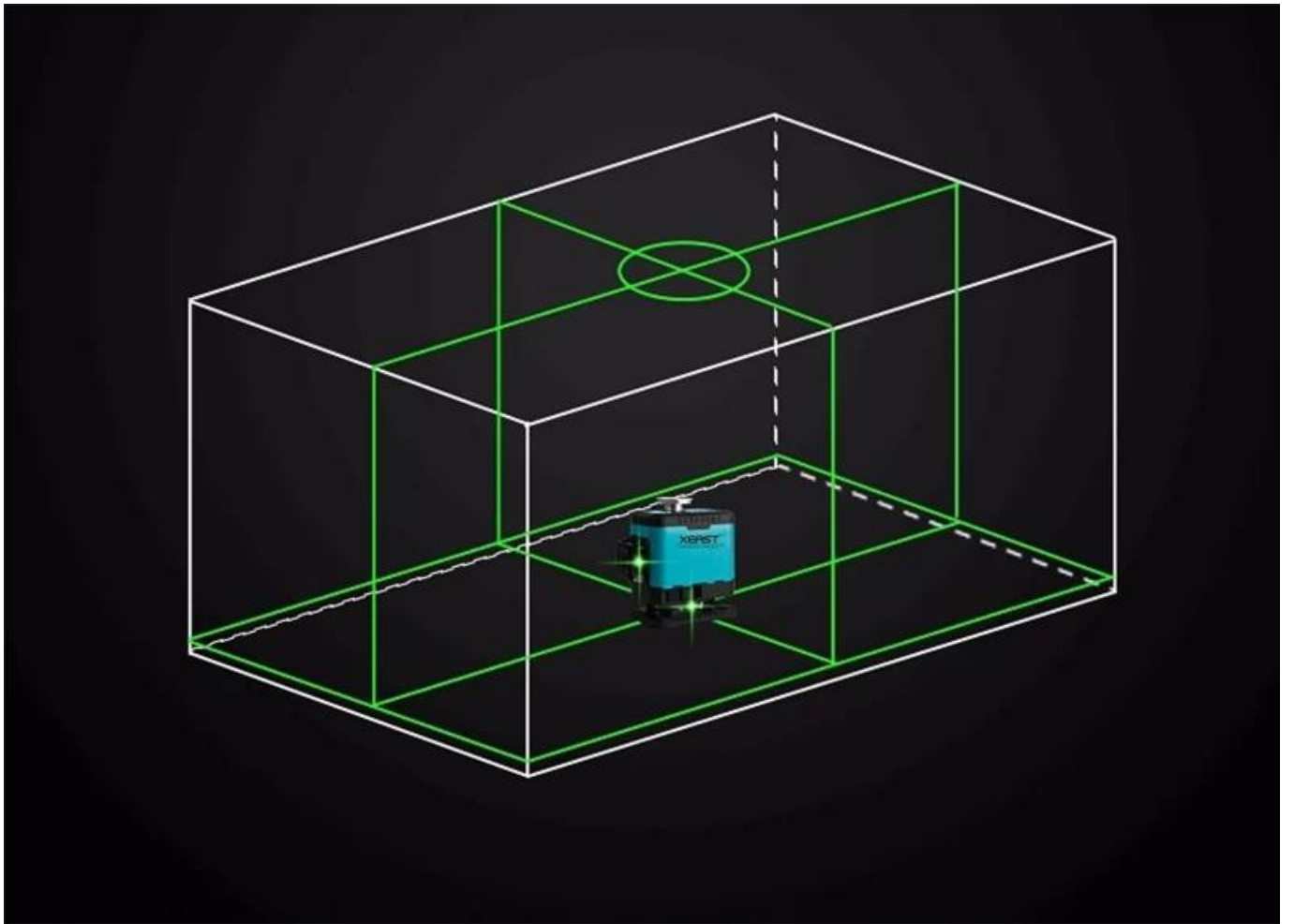
---

● PRODUCT PICTURES

XEAST®

 XEAST®

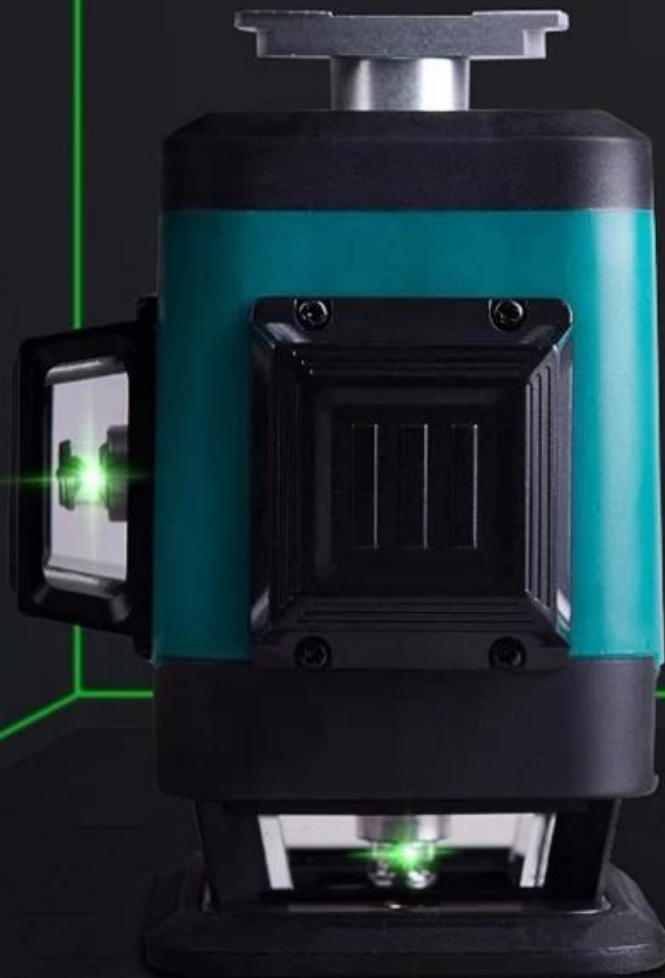








# Close to the ground and wall



2 cm on the ground

7 mm on the wall

# Tilt mode



# Remote control



Slash, pulse, switch

Vertical line

Horizontal line



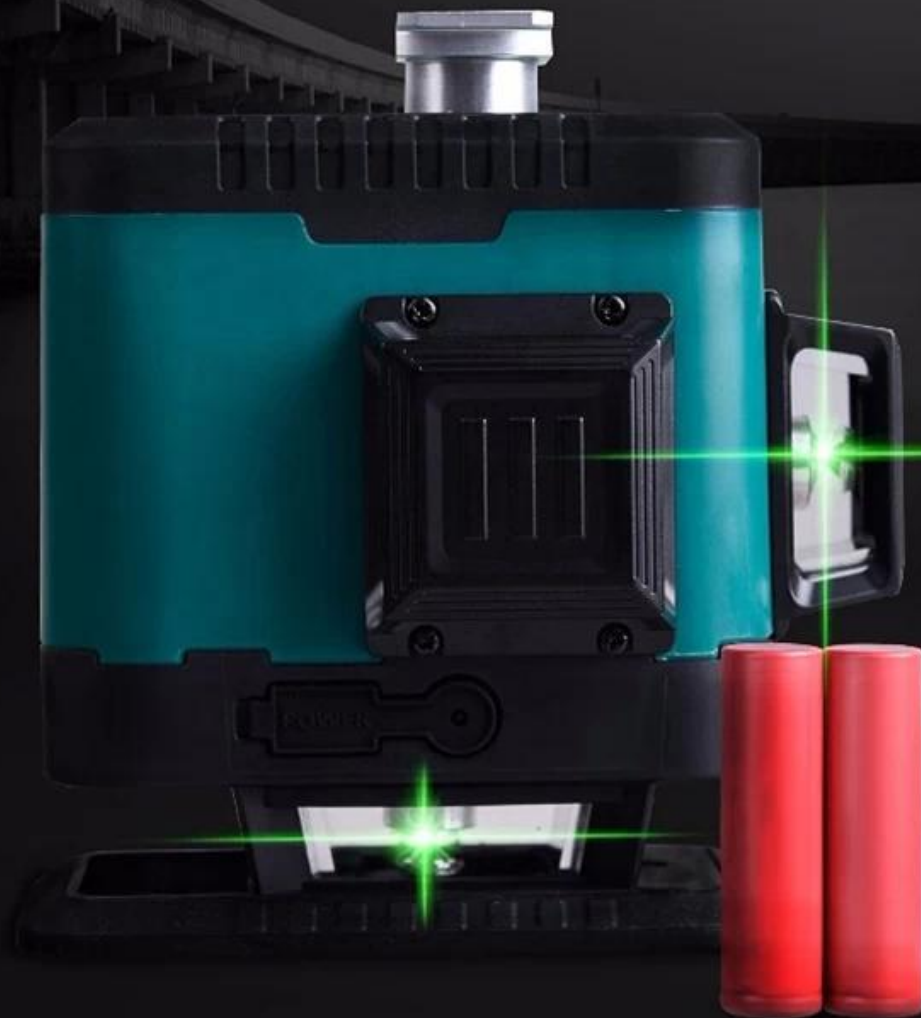


**Waterproof / Dustproof**



**Earthquake resistance**

**2pc 18650 lithium battery**  
**Continuous work for 20 hours!**



# Product CE certification





# Alarm device

$> 3^\circ$

---

# Lift platform

highest : 9cm

lowest : 2.5cm





Wall bracket



Machine



Interface



● PACKAGE INCLUDE

**XEAST**<sup>®</sup>





**SALES TEAM**



**WOKRSHOP**

