

□□:

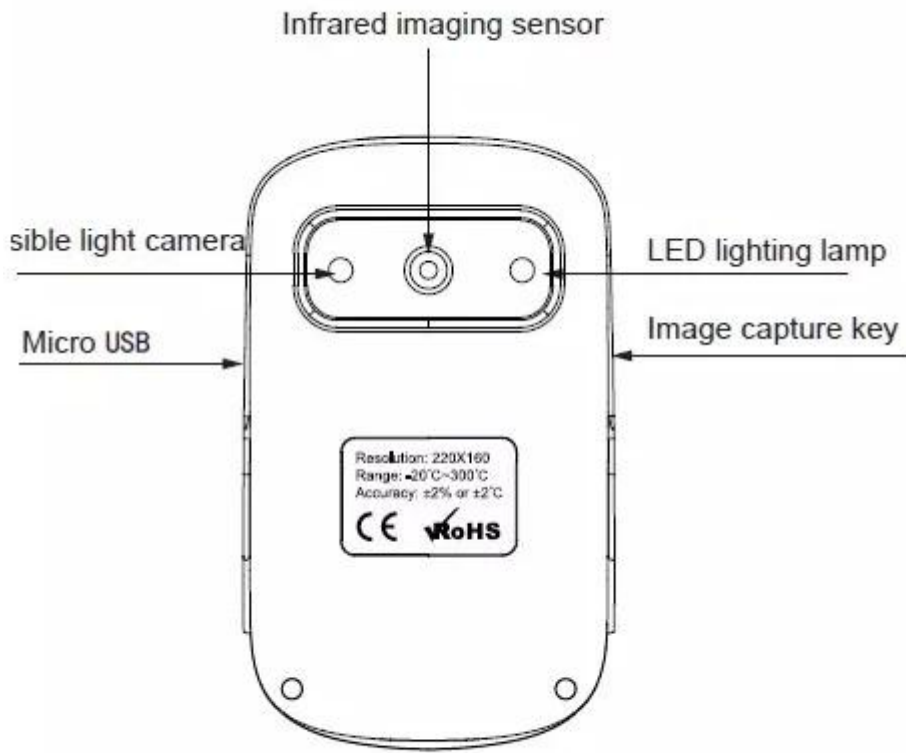
1. 100 % □□□ □□ □□.
2. □□ □□ □□ □□ □□ □□ □□ □□ □□ □□□□□□.
3. □□ □□ □□ □□ □□ □□ □□□□ □□□□ □□□□ □□□□□□.
4. □□ □□ □□ □□ □□ □□ □□□□ □□□□ □□□□ □□□□ □□ □□ □□ □□ □□ □□ □□□□.
5. □□, □□, □□□□, □□, □□, □□□□, □□□□, □□, □□ □□ □□ □□□□ □□□□ □□□□□□.

SPECIFICATION



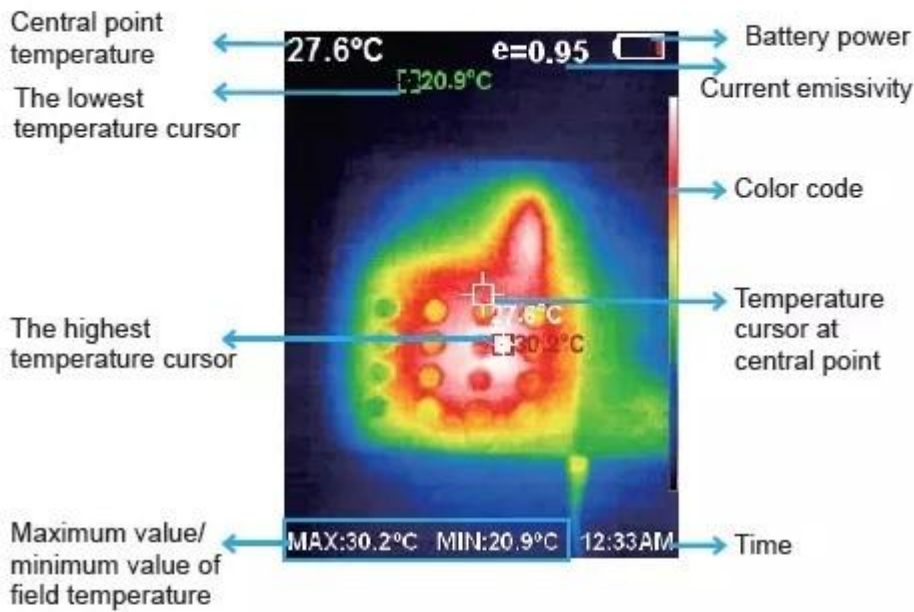
□□□ □ 2019 □ □□□ □□ □ □□□ □□□□ □□□ HT-A2

□□□□□ □□□	3.2 "□□ TFT
□□□ □□□ □□□	320 * 240
□□ □□□ □□□	640x480 (300,000 □□)
□□□ / □□ □□ □□	56 ° x42 ° / 4.0mm
□□	0.07 °C
□□ □□ □□	-20 °C ~ 300 °C (-4 °F ~ 572 °F)
□□ □□□	± 2 % / ± 2 °C
□□□	0.01□□ 1.0□□ □□ □□
□ □□□ □□□ □□	9Hz
□□ □□	8-14um
□□ □□	□□□
□□ □□□	□□□, □□□ □□, □□□ □, □□ & □□, □□ & □□
□□ □□	□ □□□□ 25 % □□ □□ □ □□ □□□.
□□ □□	□□ 3G
□□ □□	JPG
USB	□□□□ USB 2.0
□□ □□ □□	□□ □□□ 1800 □□□
□□ □□ □□ □□	□□ □□ : 5 □ / 20 □ / □□□□ □□□ □□□ □□□.
□□ □□ (□□ × □□ × □□)	140mm × 80mm × 28mm
□□ □□	208g
□□ □□	0 °C ~ 45 °C
□□ □□	-40 °C ~ 60 °C
□□ □□	& lt; 85 % RH
□□□ □□	1 x □□□ □ □□ □ 1 x US □□□ □□□ 1 x □ 1 x □□□ □□□
	1 x □□□ □□□



Back

4.2. Key Description



1. Color code: used to mark the color corresponding to the relative temperature from low to high in the field of vision.
2. The central point temperature cursor: used to indicate the central position in the screen area. The cursor color displays white. The temperature value is displayed top left corner of the screen.
3. The highest temperature cursor: used to indicate the highest temperature position in the screen area. It will move with the movement of the highest temperature. The cursor displays red. The temperature value is displayed at bottom left corner of the screen.

● PRODUCT PICTURES

XEAST®

□ □ □ **HT-02A** □ □ □ □ □

XEAST®



XEAST[®]

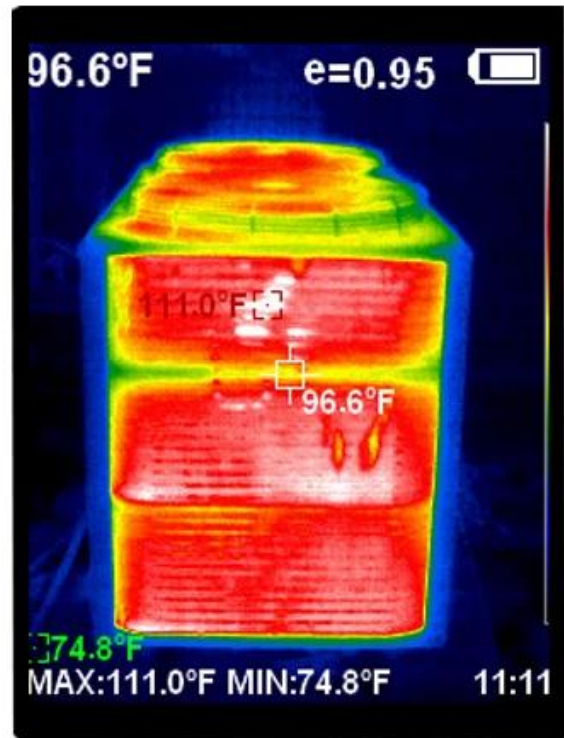


Visible imaging



300,000 high pixels

Infrared thermal imaging



320×240 resolution

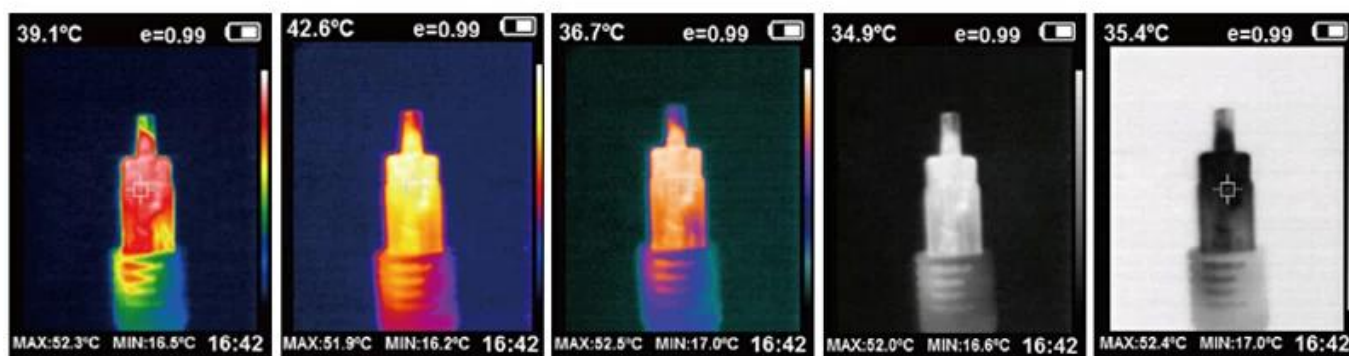
● APPLICATIONS

XEAST®

Thermal Imager HT-A2

Five major toning imaging modes

Can save/fully display the details of the target object for analysis



rainbow

Iron oxide red

Cool color

Black and white

White black

● **PACKAGE INCLUDE**



□□□ □□□ □□□ **HT-A2** □□ □□□ □□□

