

HT-18

Resolution	3.2 mm
Dimensions	220 * 160
Capacity	35,200
Accuracy	0.3
Resolution	0.07 °
Operating Temperature	-20 °C to 300 °C (-4 °F to 572 °F)
Temperature Accuracy	± 2% or ± 2 °C (± 4 °F)
FOV / Field of View	27 ° x 35 ° / 0.5
Temperature Drift	0.5 °C
Resolution	8-14µm
emissivity	0.1-10.0
Refresh Rate	8HZ
Power Consumption	0.5W
Accuracy	± 25%
Storage	SD (4G)
Image Format	JPG
Resolution	18650
Interface	USB2.0
Power Supply	5V / 20mA
Compliance	CE, RoHS
Operating Temperature	-5 °C to 40 °C (23 °F to 104 °F)
Storage Temperature	-20 °C to 50 °C (-4 °F to 122 °F)
Humidity	RH 10% to 80% RH
Dimensions	223 x 105 x 90mm
Weight	289g
Accessories	<ul style="list-style-type: none"> 1 x User Manual 1 x USB Cable 1 x Lens 1 x Lens Cap 1 x Lens Wipe 1 x Lens Cloth

HT-18





Temperature Range:
-20°C to +300°C
-4°F to 572°F
Resolution:
220×160

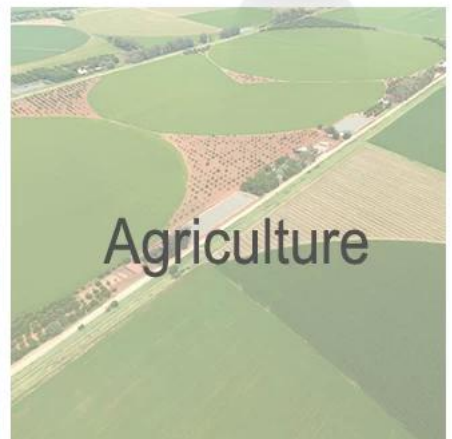




Thermal Imaging Camera

The following major functions increase the product's accuracy and usability:

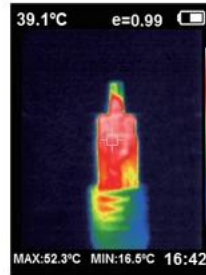
- 1, The adjustable radiation coefficient increases the measurement accuracy of half reflection surface.
- 2, The thermal point and cold point temperature mark may guide the users to the area with highest or lowest temperature of thermal image.
- 3, The selectable color palette.





Color Palette

The following is the image of the same object with selection of different color palettes.



Rainbow



Iron oxide red



Cold color



Black & white



White & black



Visible light camera

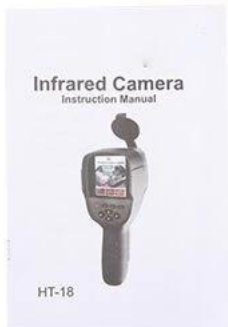
The taken pictures can be transferred to computer via USB cable

In order to increase the differentiation degree, the product is provided with a visual camera. Both thermal images and full vision images can be stored in the detachable memory card. The image may be called or stored in PC to generate a report and print



● APPLICATIONS





TERMS OF TRADE



1) 付款方式: T / T, L / C, Paypal, MoneyGram 或 Western Union
 30% 预付款, 70% 货到付款

2) 运输方式: (DHL, TNT, UPS, FEDEX, EMS, SPSR, 139 快递), LCL, FCL
 运费由买家承担, 关税由买家自理



SALES TEAM



WOKRSHOP

